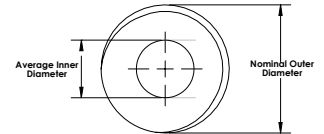
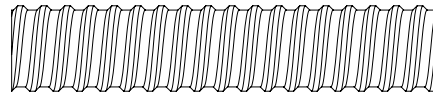
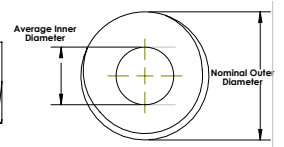
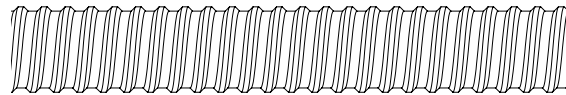




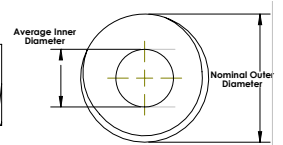
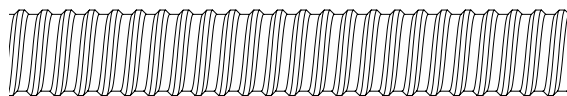
"T" THREADED HOLLOW BAR SYSTEMS							
Bar Designation	Nominal Outer Diameter in (mm)	Average Inner Diameter in (mm)	Cross Sectional Area in ² (mm ²)	Ultimate Load kips (kN)	Yield Load kips (kN)	Approximate Major Thread Diameter in (mm)	Normal Weight lbs/ft (kg/m)
T30/11	1.18 30	0.43 11	0.64 413	72.0 320	58.5 260	1.30 33	2.2 3.3
T40/20	1.57 40	0.79 20	1.13 726	121.4 540	95.6 425	1.70 43.2	3.8 5.6
T40/16	1.57 40	0.63 16	1.40 903	148.4 660	118.1 525	1.70 43.2	4.8 7.2
T52/26	2.05 52	1.03 26	1.94 1251	208.0 925	170.0 756	2.20 55.9	6.7 9.9
T76N	3.00 76	2.00 51	3.35 2161	319.0 1418	252.0 1120	3.20 81.3	10.2 15.2
T76S	3.00 76	1.77 45	4.03 2600	418.0 1859	330.0 1467	3.20 81.3	13.2 19.7
T103/78	4.06 103	3.00 78	4.87 3142	510.5 2270	404.8 1800	4.20 106.7	17.0 25.3
T103/51	4.06 103	2.00 51	8.80 5677	823.0 3660	600.4 2670	4.20 106.7	30.0 44.6



T40/20



T40/16

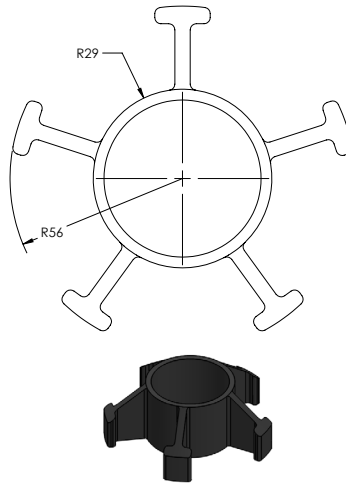


T52



"T" THREADED HOLLOW BAR COUPLERS

Bar Designation	OD in (mm)	L in (mm)	Weight lbs (kg)
T30/11	1.15 38	4.2 105	1.0 0.45
T40/20	2.1 53	5.5 140	2.6 1.18
T40/16	2.1 53	5.5 140	2.6 1.18
T52/26	2.7 68.5	6.25 160	5.2 2.36
T76N	3.8 97	8.0 200	10.2 4.54
T76S	3.8 97	8.7 220	14.4 6.53
T103	5.2 132	11.5 292	30.5 13.8



T52 CENTRALIZER

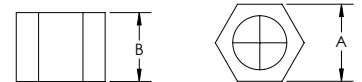
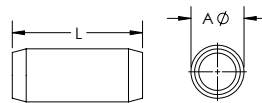
HOLLOW BAR CENTRALIZERS

Size	OD in (mm)	L in (mm)	Weight lbs (kg)
T30	2.75 70	1.40 35	0.5 0.21
	3.40 88	1.40 35	0.6 0.27
T40	3.40 88	1.50 40	0.8 0.37
T52	4.40 112	1.40 35	1.0 0.41
T76	5.00 130	1.75 45	2.0 0.89
T103	6.40 165	3.20 80	6.5 2.94

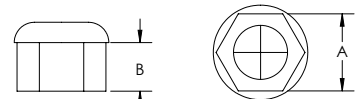
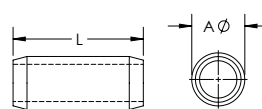
"T" THREADED HOLLOW BAR NUTS

Bar Designation	A in (mm)	B in (mm)	Weight lbs (kg)
T30/11	1.8 46.0	1.4 36.0	1.0 0.45
T40/20	2.5 64.0	2.0 50.0	2.7 1.22
T40/16	2.5 64.0	2.0 50.0	2.6 1.18
T52/26	3.2 81	2.5 63.5	5.1 2.31
T76N	4.0 102.0	3.1 80.0	6.2 2.81
T76S	4.0 102.0	3.1 80.0	6.2 2.81
T103	5.25 133.0	5.125 130	13.0 5.90

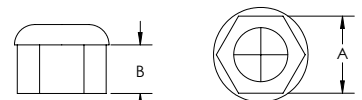
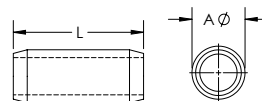
T40/20

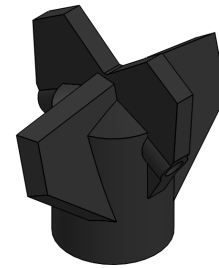


T40/16

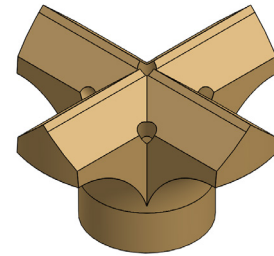


T52

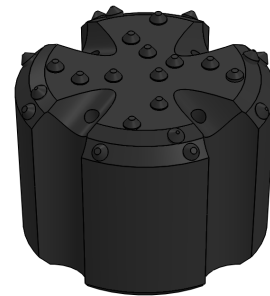




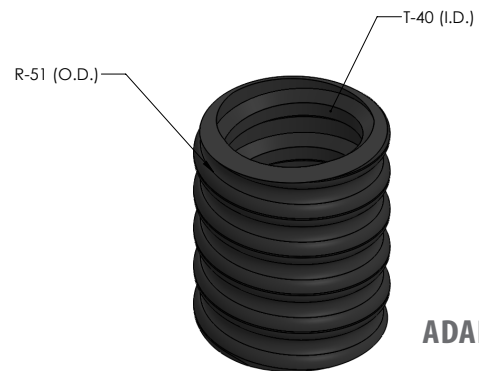
STEPPED CLAY BIT



CROSS CUT CARBIDE BIT



CARBIDE BUTTON BIT



ADAPTERS

CARBIDE CROSS, STEEL CROSS CUT, AND BUTTON BITS

Bar Sizes	Size in (mm)	Weight lbs/unit (kg/unit)
T30	2.0 50.8	1.0 0.45
	2.5 63.5	2.0 0.91
	3.0 76.2	2.9 1.32
T40	2.5 63.5	2.0 0.91
	3.0 76.2	2.9 1.32
	3.5 88.9	3.5 1.59
	4.0 101.6	5.5 2.49
	4.5 114.3	7.0 3.18
	5.0 127.0	10.5 4.76
T76	5.0 127.0	10.5 4.76
	6.0 152.4	13.0 5.90
	7.0 177.8	14.5 6.58
	8.0 203.2	16.0 7.26